

reviewed 6/9/17

6/8/2017

*Bylee*

**Worklist: 1751**

<u>LAB CASE</u>	<u>ITEM</u>	<u>TASK ID</u>	<u>DESCRIPTION</u>
C2017-0747	1	86712	AM 3 Urine Carboxy-THC
C2017-1005	3	86709	AM 3 Urine Carboxy-THC
C2017-1006	1	86710	AM 3 Urine Carboxy-THC
C2017-1021	1	86711	AM 3 Urine Carboxy-THC



*[Handwritten signature]*

## 2.4.4 Carboxy-THC QC Calculations

Run Date: 6/6/2017

Case Calculations:  
Lab Case #: *BRC3*

EIC Ion 371 Corr. Area:	67217	
EIC Ion 473 Corr. Area:	32106	473:371 Ratio: <b>0.478</b>
EIC Ion 488 Corr. Area:	23792	488:371 Ratio: <b>0.354</b>

### Quality Control Calculations:

Retention Time acceptable range: 4.553 to 4.753

	<i>1st ctrl</i>	<i>2nd ctrl</i>
EIC Ion 371 Corr. Area:	289639	315415
EIC Ion 473 Corr. Area:	134797	147856
EIC Ion 488 Corr. Area:	87658	92066

Approximate minimum corrected area of 371 ion: ~ **57928**

Ratio of 473:371			
<i>1st ctrl</i>	<u>0.465</u>	<i>2nd ctrl</i>	<u>0.469</u>
		avg.	0.467

Accepted Range  
(+/- 20%) 0.374 - 0.560

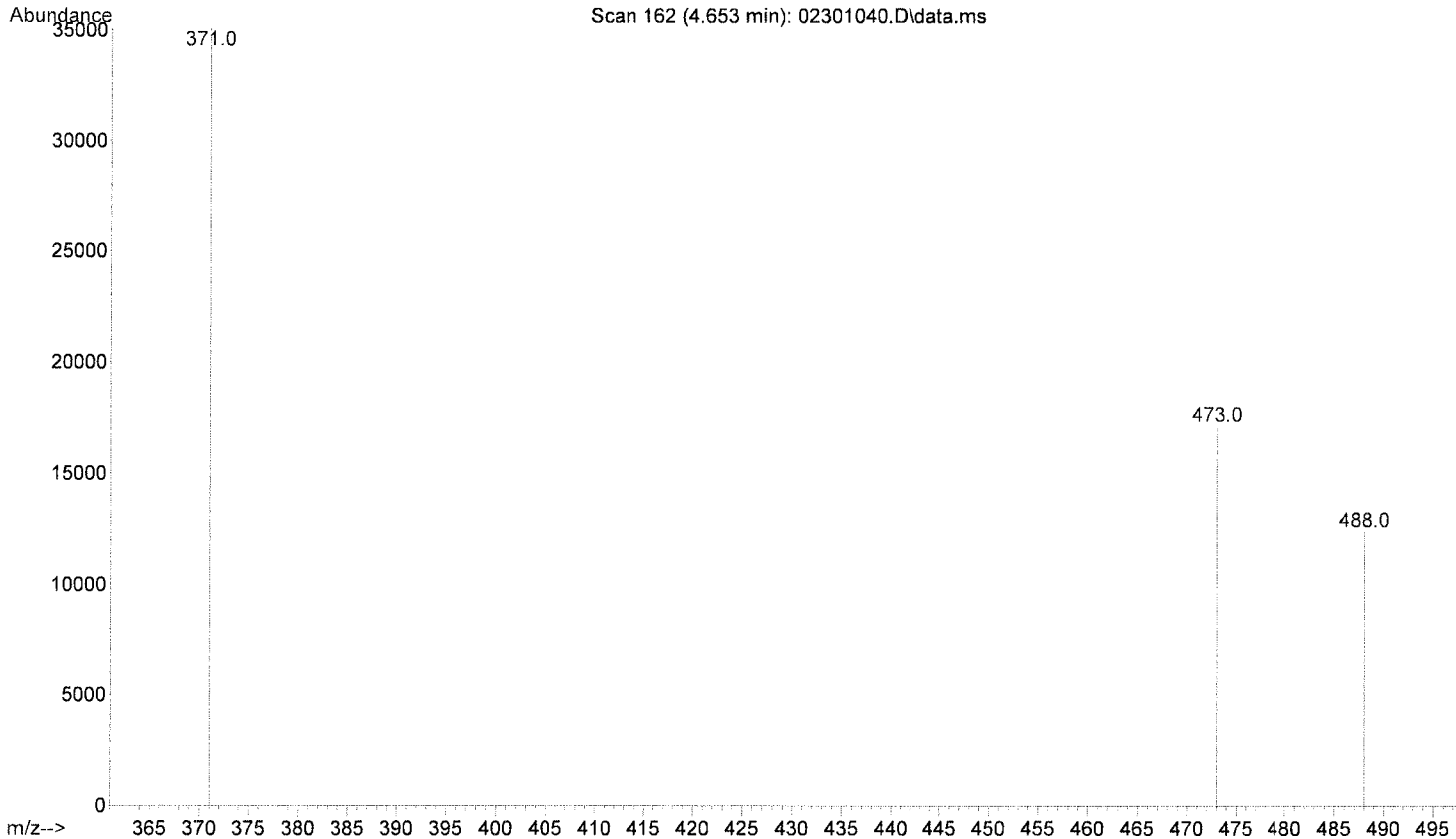
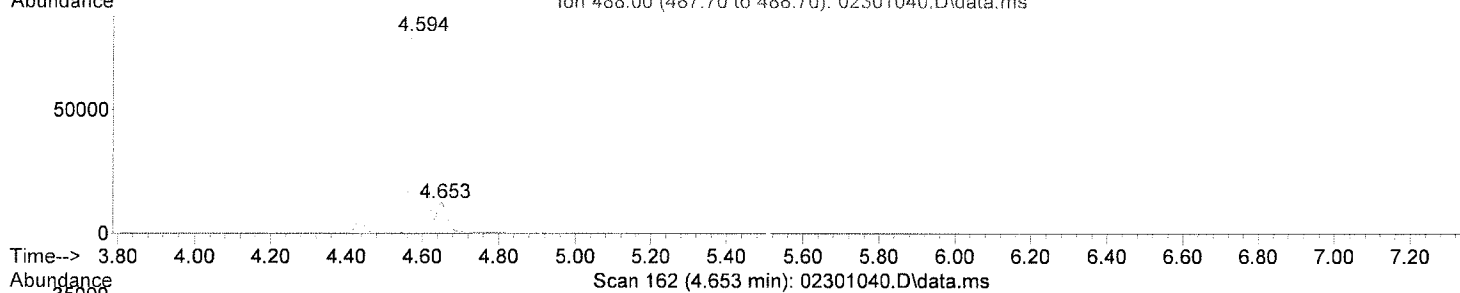
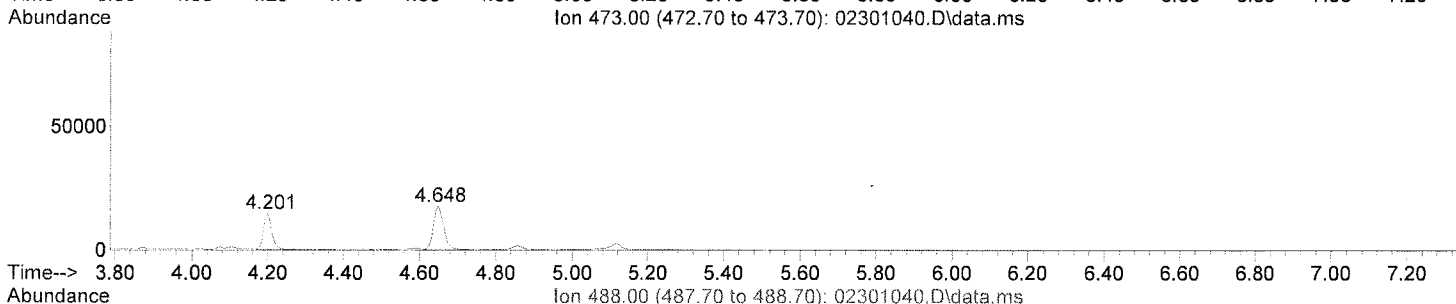
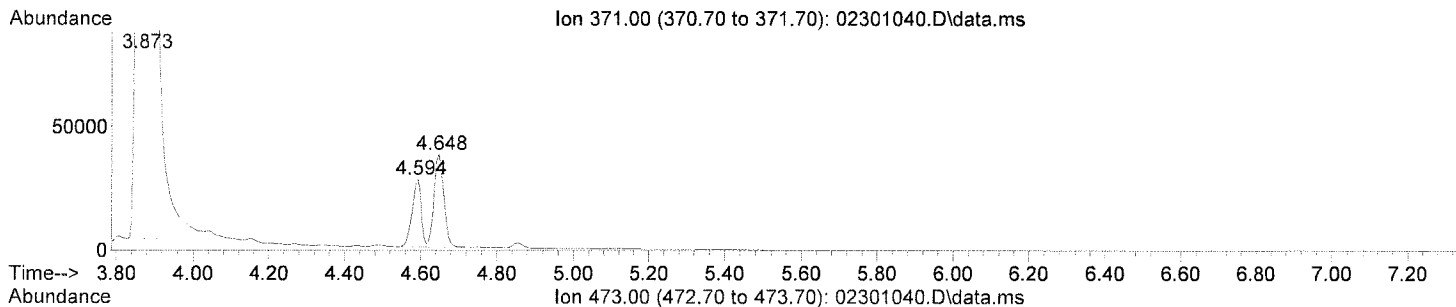
Ratio of 488:371			
<i>1st ctrl</i>	<u>0.303</u>	<i>2nd ctrl</i>	<u>0.292</u>
		avg.	0.297

Accepted Range  
(+/- 20%) 0.238 - 0.357

Carboxy-calculation sheet  
Revision 0 effective date 10/23/13  
Issuing authority: Quality Manager



File :I:\Instrument Data\CDA\5977 TOX GCMS CdA\2017\6-6-2017\02301  
... 040.D  
Operator : Instrument 65198  
Instrument : Instrument # 65198- Tox Cd'A  
Acquired : 06 Jun 2017 23:10 using AcqMethod cthc 101415.M  
Sample Name: brc3 control  
Misc Info : lot 68440; am 3



Area Percent Report

Data Path : I:\Instrument Data\CDA\5977 TOX GCMS CdA\2017\6-6-2017\  
 Data File : 02301040.D  
 Acq On : 06 Jun 2017 23:10  
 Operator : Instrument 65198  
 Sample : brc3 control  
 Misc : lot 68440; am 3  
 ALS Vial : 23 Sample Multiplier: 1

Integration Parameters: rteint.p  
 Integrator: RTE  
 Smoothing : ON Filtering: 5  
 Sampling : 1 Min Area: 15000 Area counts  
 Start Thrs: 0.2 Max Peaks: 100  
 Stop Thrs : 0 Peak Location: TOP

If leading or trailing edge < 100 prefer < Baseline drop else tangent >  
 Peak separation: 5

Method : C:\msdchem\1\METHODS\DEFAULT.M  
 Title :

Signal : EIC Ion 371.00 (370.70 to 371.70): 02301040.D\data.ms

peak #	R.T. min	first scan	max scan	last scan	PK TY	peak height	corr. area	corr. % max.	% of total
1	3.873	9	17	46	rBV	7255015	9265731	100.00%	98.817%
2	4.594	142	151	155	rBV	27295	43728	0.47%	0.466%
3	4.648	155	161	176	rVB	37502	<u>67217</u>	0.73%	0.717%

Sum of corrected areas: 9376676

Signal : EIC Ion 473.00 (472.70 to 473.70): 02301040.D\data.ms

peak #	R.T. min	first scan	max scan	last scan	PK TY	peak height	corr. area	corr. % max.	% of total
1	4.201	72	78	97	rVB	14413	21094	65.70%	39.650%
2	4.648	154	161	178	rVB	17340	<u>32106</u>	100.00%	60.350%

Sum of corrected areas: 53200

Signal : EIC Ion 488.00 (487.70 to 488.70): 02301040.D\data.ms

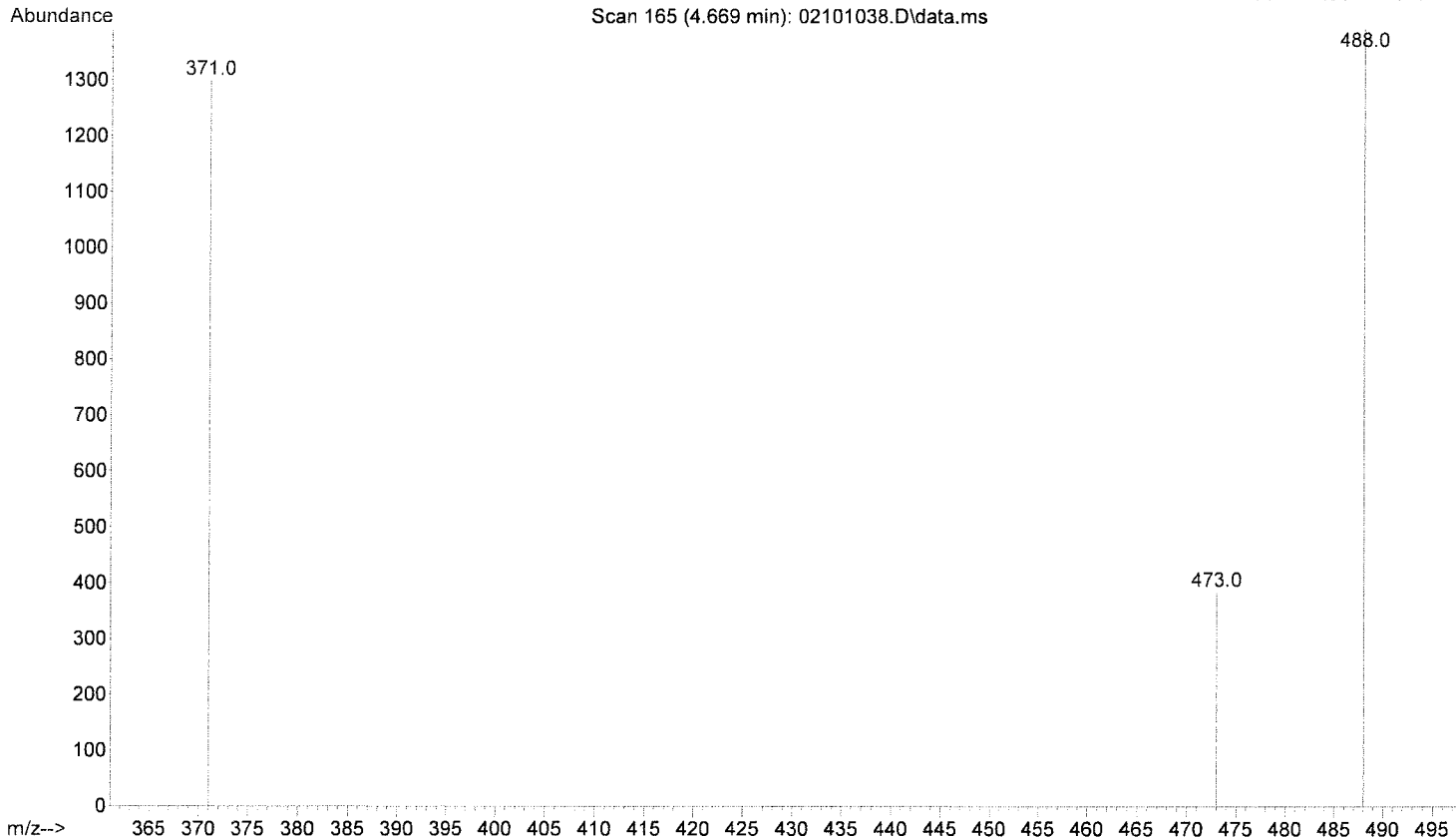
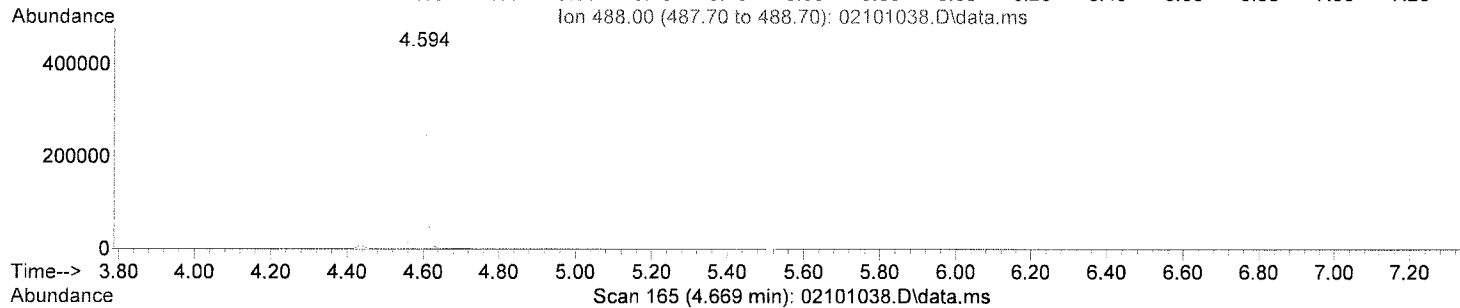
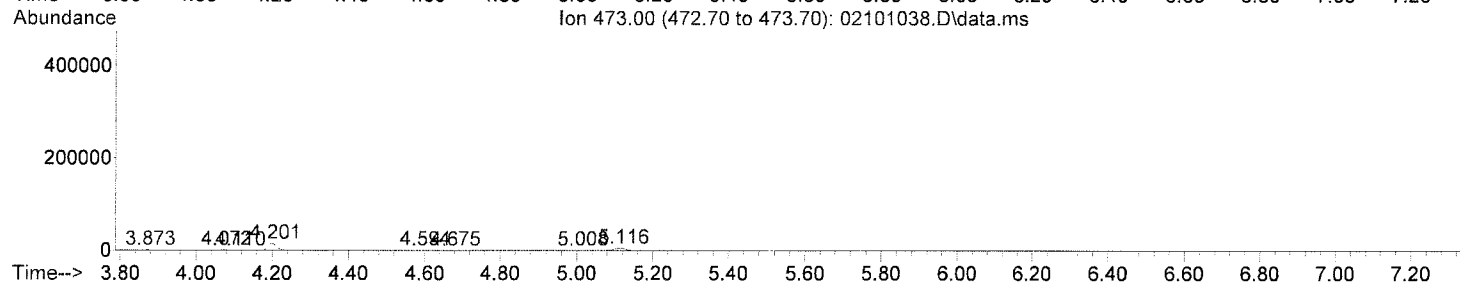
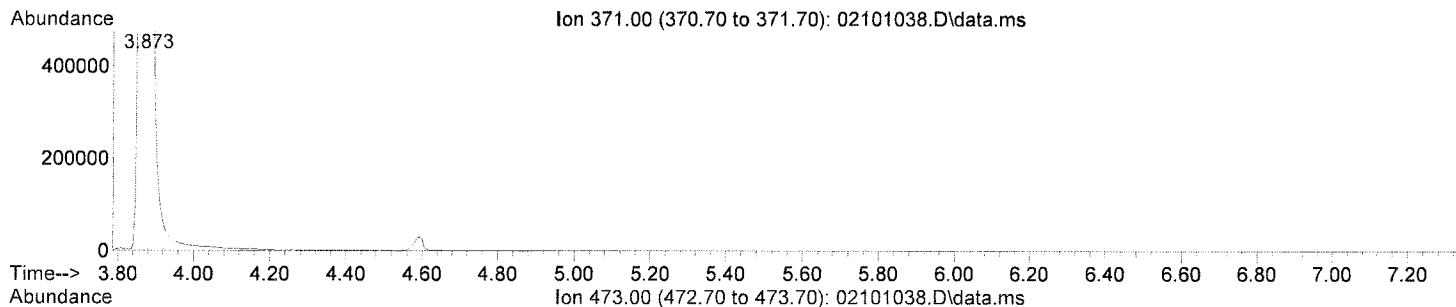
peak #	R.T. min	first scan	max scan	last scan	PK TY	peak height	corr. area	corr. % max.	% of total
1	4.594	140	151	158	rBV	520114	846909	100.00%	97.267%
2	4.653	158	162	195	rVB2	12112	<u>23792</u>	2.81%	2.733%

Sum of corrected areas: 870701

DEFAULT.M Thu Jun 08 11:36:57 2017



File :I:\Instrument Data\CDA\5977 TOX GCMS CdA\2017\6-6-2017\02101  
... 038.D  
Operator : Instrument 65198  
Instrument : Instrument # 65198- Tox Cd'A  
Acquired : 06 Jun 2017 22:52 using AcqMethod cthc 101415.M  
Sample Name: negative control  
Misc Info : lot 42617; am 3



Area Percent Report

Data Path : I:\Instrument Data\CDA\5977 TOX GCMS CdA\2017\6-6-2017\  
 Data File : 02101038.D  
 Acq On : 06 Jun 2017 22:52  
 Operator : Instrument 65198  
 Sample : negative control  
 Misc : lot 42617; am 3  
 ALS Vial : 21 Sample Multiplier: 1

Integration Parameters: rteint.p  
 Integrator: RTE  
 Smoothing : ON Filtering: 5  
 Sampling : 1 Min Area: 2 % of largest Peak  
 Start Thrs: 0.2 Max Peaks: 100  
 Stop Thrs : 0 Peak Location: TOP

If leading or trailing edge < 100 prefer < Baseline drop else tangent >  
 Peak separation: 5

Method : C:\msdchem\1\METHODS\DEFAULT.M  
 Title :

Signal : EIC Ion 371.00 (370.70 to 371.70): 02101038.D\data.ms

peak #	R.T. min	first scan	max scan	last scan	PK TY	peak height	corr. area	corr. % max.	% of total
1	3.873	9	17	65	rBV	7564653	10049540	100.00%	100.000%

Sum of corrected areas: 10049540

Signal : EIC Ion 473.00 (472.70 to 473.70): 02101038.D\data.ms

peak #	R.T. min	first scan	max scan	last scan	PK TY	peak height	corr. area	corr. % max.	% of total
1	3.873	12	17	27	rVB	612	767	3.47%	2.028%
2	4.072	48	54	58	rBV	835	1174	5.30%	3.104%
3	4.110	58	61	68	rVV2	451	710	3.21%	1.877%
4	4.201	71	78	97	rVB	15062	22131	100.00%	58.504%
5	4.594	144	151	156	rVB	538	866	3.91%	2.289%
6	4.675	159	166	176	rVB	349	627	2.83%	1.658%
7	5.008	221	228	233	rBV2	208	443	2.00%	1.171%
8	5.116	234	248	280	rVB	5055	11110	50.20%	29.370%

Sum of corrected areas: 37828

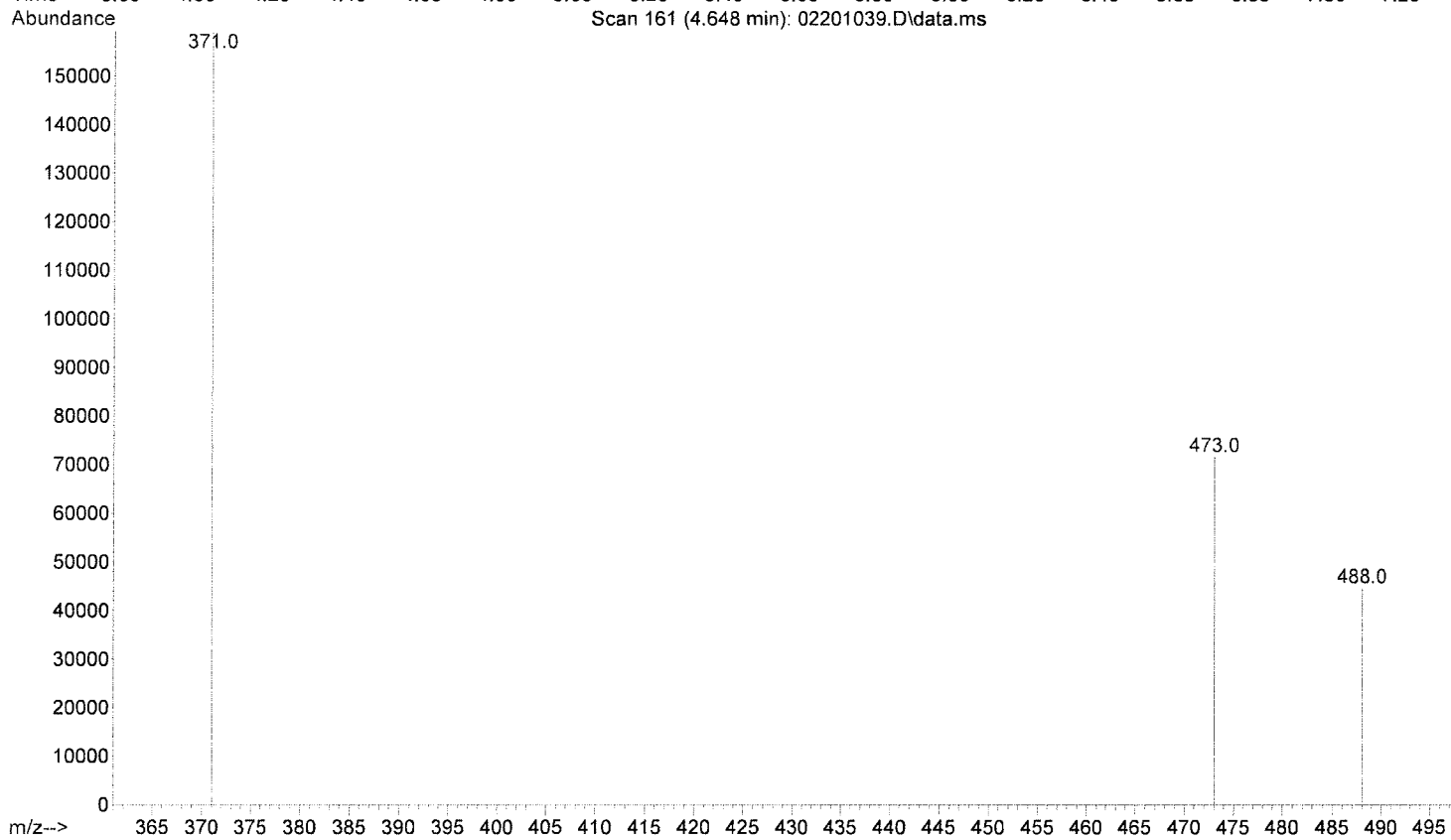
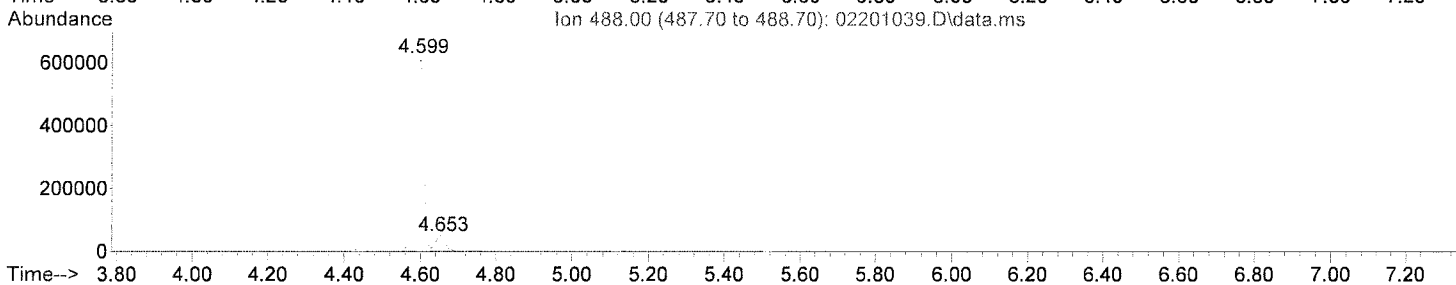
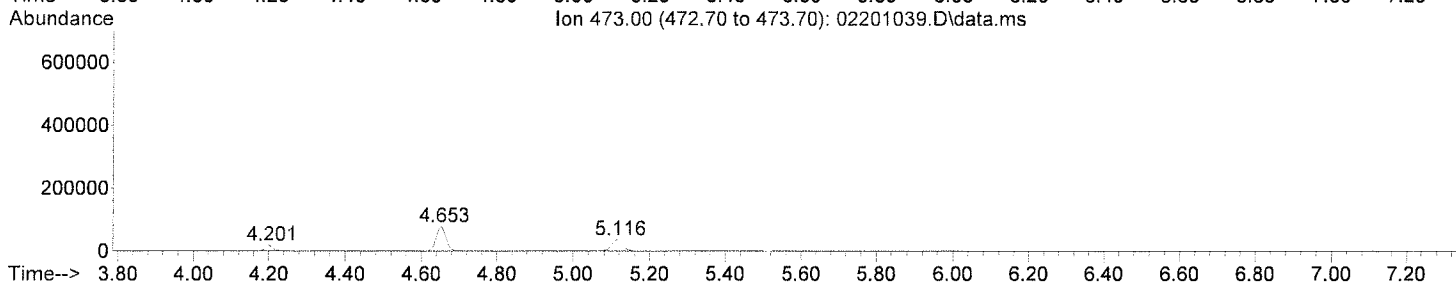
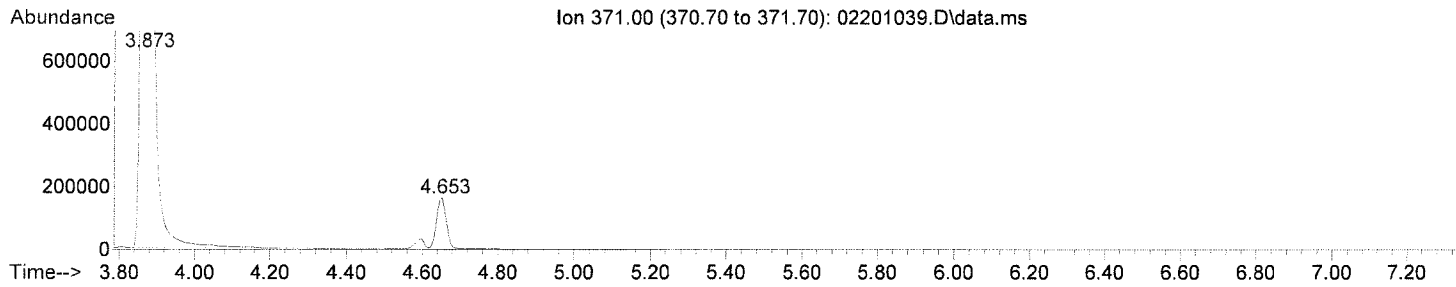
Signal : EIC Ion 488.00 (487.70 to 488.70): 02101038.D\data.ms

peak #	R.T. min	first scan	max scan	last scan	PK TY	peak height	corr. area	corr. % max.	% of total
1	4.594	140	151	206	rBV	563534	931500	100.00%	100.000%

Sum of corrected areas: 931500



File : I:\Instrument Data\CDA\5977 TOX GCMS CdA\2017\6-6-2017\02201  
... 039.D  
Operator : Instrument 65198  
Instrument : Instrument # 65198- Tox Cd'A  
Acquired : 06 Jun 2017 23:01 using AcqMethod cthc 101415.M  
Sample Name: positive control  
Misc Info : FE03121501 in neg lot 42617; am 3



Area Percent Report

Data Path : I:\Instrument Data\CDA\5977 TOX GCMS CdA\2017\6-6-2017\  
 Data File : 02201039.D  
 Acq On : 06 Jun 2017 23:01  
 Operator : Instrument 65198  
 Sample : positive control  
 Misc : FE03121501 in neg lot 42617; am 3  
 ALS Vial : 22 Sample Multiplier: 1

Integration Parameters: rteint.p  
 Integrator: RTE  
 Smoothing : ON Filtering: 5  
 Sampling : 1 Min Area: 2 % of largest Peak  
 Start Thrs: 0.2 Max Peaks: 100  
 Stop Thrs : 0 Peak Location: TOP

If leading or trailing edge < 100 prefer < Baseline drop else tangent >  
 Peak separation: 5

Method : C:\msdchem\1\METHODS\DEFAULT.M  
 Title :

Signal : EIC Ion 371.00 (370.70 to 371.70): 02201039.D\data.ms

peak #	R.T. min	first scan	max scan	last scan	PK TY	peak height	corr. area	corr. % max.	% of total
1	3.873	9	17	46	rBV	8330639	10968563	100.00%	97.427%
2	4.653	155	162	184	rVB	161415	<u>289639</u>	2.64%	2.573%

Sum of corrected areas: 11258202

Signal : EIC Ion 473.00 (472.70 to 473.70): 02201039.D\data.ms

peak #	R.T. min	first scan	max scan	last scan	PK TY	peak height	corr. area	corr. % max.	% of total
1	4.201	68	78	98	rVB	17252	25197	18.69%	10.979%
2	4.653	154	162	181	rVB	76950	<u>134797</u>	100.00%	58.736%
3	5.116	236	248	281	rVB	34992	<u>69504</u>	51.56%	30.285%

Sum of corrected areas: 229498

Signal : EIC Ion 488.00 (487.70 to 488.70): 02201039.D\data.ms

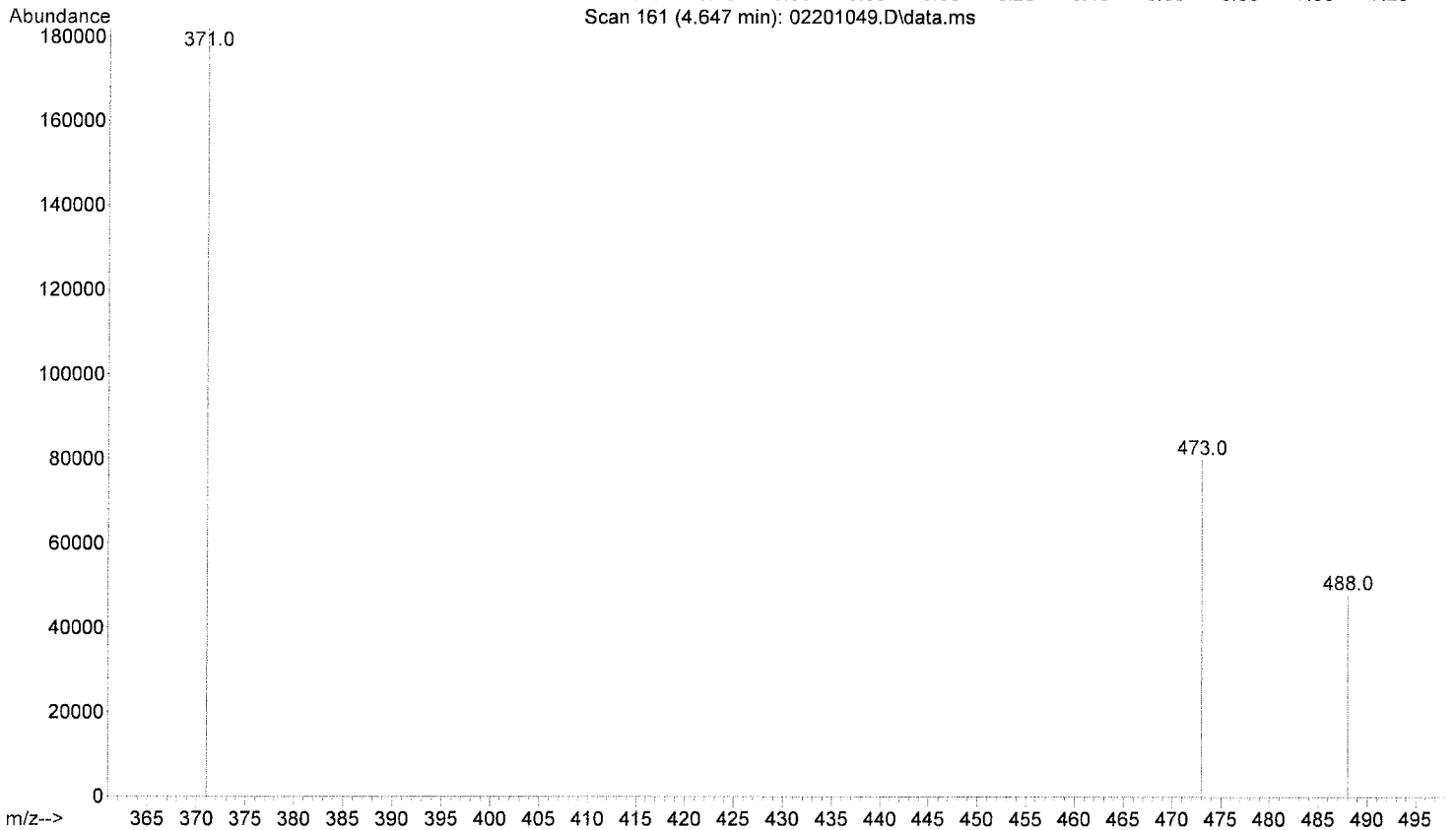
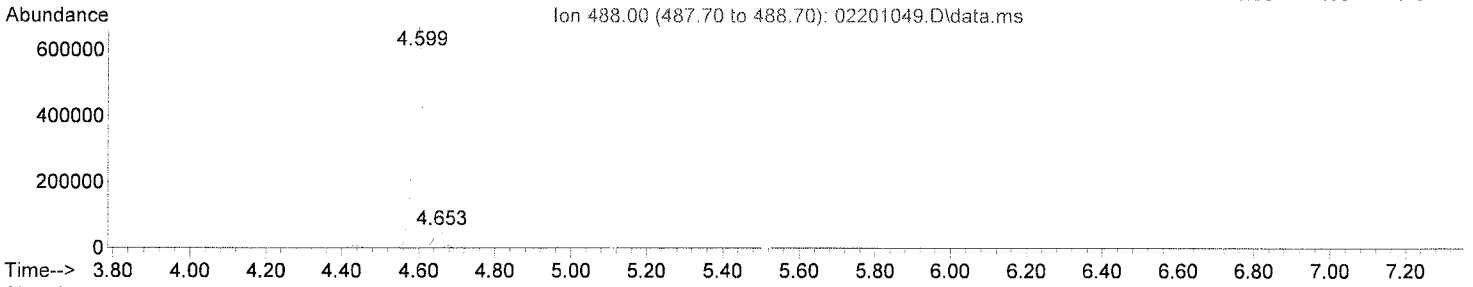
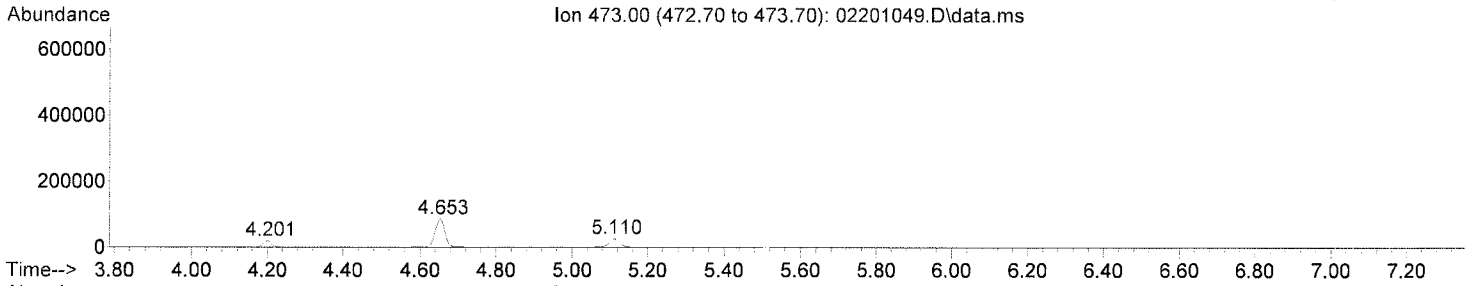
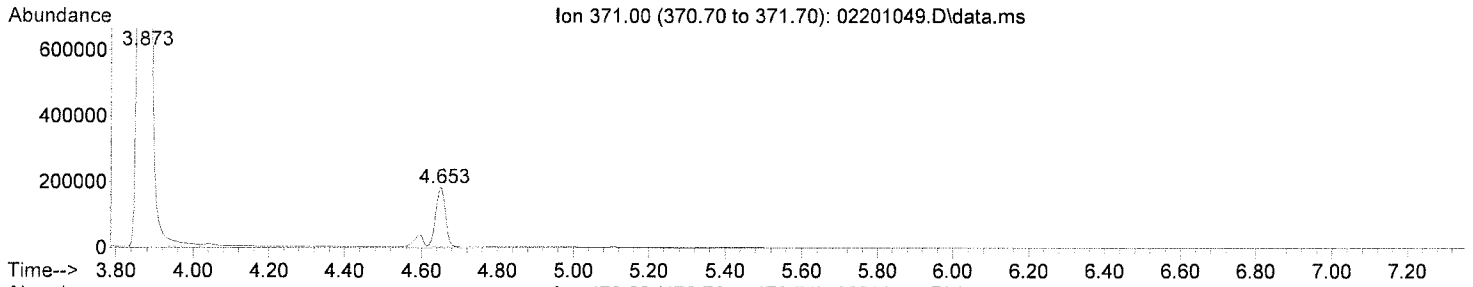
peak #	R.T. min	first scan	max scan	last scan	PK TY	peak height	corr. area	corr. % max.	% of total
1	4.599	140	152	157	rBV	615240	993875	100.00%	91.895%
2	4.653	157	162	172	rVB	48560	<u>87658</u>	8.82%	8.105%

Sum of corrected areas: 1081533

DEFAULT.M Thu Jun 08 11:25:24 2017



File : I:\Instrument Data\CDA\5977 TOX GCMS CdA\2017\6-6-2017\02201  
... 049.D  
Operator : Instrument 65198  
Instrument : Instrument # 65198- Tox Cd'A  
Acquired : 07 Jun 2017 00:34 using AcqMethod cthc 101415.M  
Sample Name: positive control  
Misc Info : FE03121501 in neg lot 42617; am 3



Area Percent Report

Data Path : I:\Instrument Data\CDA\5977 TOX GCMS CdA\2017\6-6-2017\  
 Data File : 02201049.D  
 Acq On : 07 Jun 2017 00:34  
 Operator : Instrument 65198  
 Sample : positive control  
 Misc : FE03121501 in neg lot 42617; am 3  
 ALS Vial : 22 Sample Multiplier: 1

Integration Parameters: rteint.p  
 Integrator: RTE  
 Smoothing : ON Filtering: 5  
 Sampling : 1 Min Area: 2 % of largest Peak  
 Start Thrs: 0.2 Max Peaks: 100  
 Stop Thrs : 0 Peak Location: TOP

If leading or trailing edge < 100 prefer < Baseline drop else tangent >  
 Peak separation: 5

Method : C:\msdchem\1\METHODS\DEFAULT.M  
 Title :

Signal : EIC Ion 371.00 (370.70 to 371.70): 02201049.D\data.ms

peak #	R.T. min	first scan	max scan	last scan	PK TY	peak height	corr. area	corr. % max.	% of total
1	3.873	8	17	44	rBV	8384628	11538546	100.00%	97.339%
2	4.653	155	162	184	rVB	178809	<u>315415</u>	2.73%	2.661%

Sum of corrected areas: 11853961

Signal : EIC Ion 473.00 (472.70 to 473.70): 02201049.D\data.ms

peak #	R.T. min	first scan	max scan	last scan	PK TY	peak height	corr. area	corr. % max.	% of total
1	4.201	68	78	90	rBV	19568	27497	18.60%	12.232%
2	4.653	154	162	178	rVB	85937	<u>147856</u>	100.00%	65.774%
3	5.110	237	247	259	rVB	25854	<u>49442</u>	33.44%	21.994%

Sum of corrected areas: 224795

Signal : EIC Ion 488.00 (487.70 to 488.70): 02201049.D\data.ms

peak #	R.T. min	first scan	max scan	last scan	PK TY	peak height	corr. area	corr. % max.	% of total
1	4.599	139	152	157	rBV	676351	1077001	100.00%	92.125%
2	4.653	157	162	171	rVB	53882	<u>92066</u>	8.55%	7.875%

Sum of corrected areas: 1169067

DEFAULT.M Thu Jun 08 11:26:39 2017